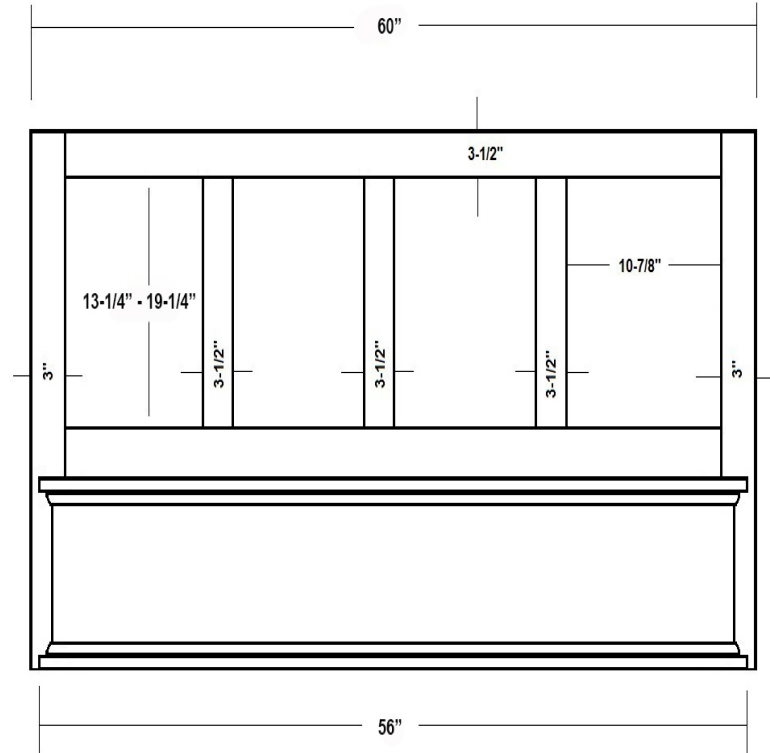


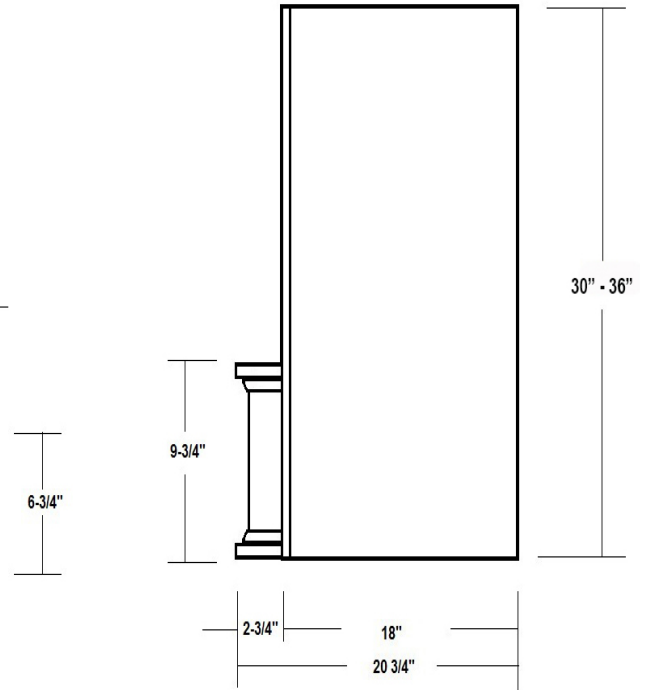


Mantel Style Range Hood

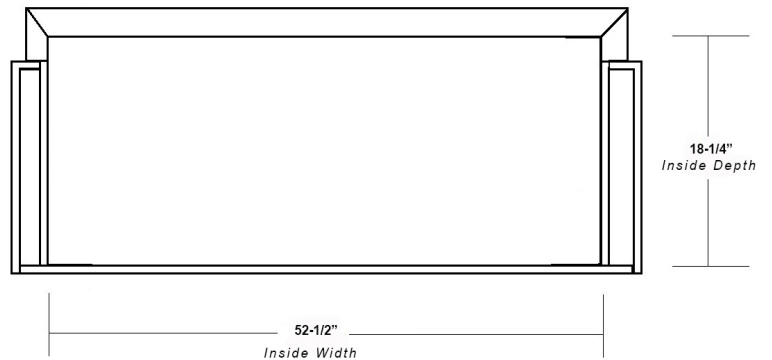
Front View



Side View



| Item # | Dimensions (h) x (w) x (d) | Liner | Liner |
|-------------|----------------------------|-----------|-----------|
| SY-WMHS6030 | 30" x 60" x 20-3/4" | SY-HLB-48 | SY-HLZ-48 |
| SY-WMHS6036 | 36" x 60" x 20-3/4" | SY-HLB-48 | SY-HLZ-48 |



- Hardwood Plywood and Solid Lumber Construction
- 1/2" Rear Plywood Stretchers for wall mounting
- Accepts SY-HLB series Powder Coated or Stainless Steel Liners (*sold separately*)
- Select from 250, 390 or 500 CFM Broan Ventilation power packs (*sold separately*) or
- Ascension 350SL, 350SS and 500SS CFM Ventilation power packs (*sold separately*) or
- Z-Line 1200 CFM Professional Ventilators (*requires HLZ series Liners*)
- Available in Alder, Cherry, Hickory, Maple and Red Oak
- Increased Depth option available
- Base section will accommodate Ornaments up to 5" x 24"

